



EDIMAX Technology Co., Ltd.

www.edimax.com

2009

PRODUCT GUIDE

Wireless • Print Servers / MFP Servers • Routers • NAS • IP Cameras
Home Entertainment • Connectivity • Switches • KVM Switches

Corporate Overview Edimax Technology

Background

Edimax Technology is dedicated to the design, development, manufacturing and marketing of a broad range of networking solutions. Since Edimax was founded in Taiwan in 1986, the company has grown to be among Asia's leading manufacturers of advanced network communication products.

Worldwide Offices

Edimax's global presence includes subsidiaries in the USA, China and Europe. The company maintains branch offices in Miami, San Jose, Beijing, the Netherlands, United Kingdom, Poland, Romania, France, Germany, Australia, India, Ukraine, Dubai and Russia. Currently, Edimax serves over 70 countries via our worldwide distribution channels.

Research & Development

Edimax's Taiwan and China based engineering team accounts for over 20% of our worldwide staffs. Their solid background and professional experience have contributed to our success in developing products to continuously meet market demands. Each year, we increase our investment in R&D to strengthen the capability to develop innovative products for today's dynamic and fast-paced networking industry.

Product Range

The comprehensive product range of Edimax consists of the product categories: Wireless, Connectivity, Routers, Switches, Print Servers, IP Cameras, Business Solutions and VoIP / Home Entertaining.

All products have been certified by CE, FCC and C-tick emission and in 2003, Edimax was ISO 9000 and ISO 14000 certified. The 802.11n solutions from Edimax are additionally Wi-Fi certified. Driver compatibility tests are being performed by Microsoft, Novell and NSTL. Furthermore, Edimax has entered in partnerships with several chipset vendors and participates among others in the Wi-Fi alliance and the Gigabit Ethernet Alliance.

Networking People Together

Our mission is simple and clear: "Networking People Together". With over 20 years experience in the networking industry, we are able to deliver the best-in-class solutions to our global partners and customers. We are committed to bringing the advantages of the latest networking technologies to the PC users by offering the best price-performance products and solutions.

CONTENT

02	Wireless (802.11b/g/n)
05	Wireless (802.11b/g)
09	Wireless (Antenna and Cable Kits)
12	Routers (Broadband / ADSL 2+ / ADSL Modem)
14	Print Servers / MFP Servers
18	IP Cameras & Home Entertainment
19	NAS
20	Connectivity (Powerline / Power over Ethernet)
22	NAC & LOAD BALANCER
23	Switches
26	KVM Switches
28	Connectivity (Network Adapter)
30	Connectivity (Media Converter)





WIRELESS

BR-6574n nMAX Wireless 802.11n Gigabit Broadband Router

- nMAX**
- Complies with wireless 802.11b/g/n standards
 - Increases the wireless speed up to 12 times faster and extends the coverage 6 times further*
 - Includes 1 Gigabit WAN port and 4 Gigabit Ethernet ports
 - Supports EZview to manage LAN devices
 - Includes multi-languages setup wizard for Internet connection, wireless settings and firmware upgrade
 - Supports WPS configuration button
 - Supports WEP, WPA, WPA2, DDNS, DMZ, Virtual Server, QoS and DHCP



EW-7416APn Wireless 802.11n Access Point

- nMAX**
- Complies with wireless 802.11b/g/n standards
 - Increases the wireless speed up to 12 times faster and extends the coverage 5 times further*
 - Supports point-to-point and point-to-multi point bridge function
 - Supports WDS mode, Universal Repeater mode and AP client mode
 - Supports WPA, WPA2 enhanced security function and WPS configuration button



BR-6524n nMAX Wireless 802.11n Broadband Router

- nMAX**
- Complies with wireless 802.11b/g/n standards
 - Increases the wireless speed up to 12 times faster and extends the coverage 6 times further*
 - Supports EZview to manage LAN devices
 - Includes multi-languages setup wizard for Internet connection, wireless settings and firmware upgrade
 - Supports WPS configuration button
 - Supports WEP, WPA, WPA2, DDNS, DMZ, Virtual Server, QoS and DHCP



EW-7415PDn Wireless 802.11n Power over Ethernet Access Point

- Complies with 802.11b/g/n and IEEE802.3af PoE standards
- Increases the wireless speed up to 12 times faster and extends the coverage 5 times further*
- Supports point-to-point and point-to-multi point bridge function
- Supports WDS mode, Universal Repeater mode and AP client mode
- Supports WPA, WPA2 enhanced security function and WPS configuration button



BR-6424nV2.0 nMAX Wireless 802.11n Broadband Router

- nMAX**
- Complies with wireless 802.11b/g/n standards
 - Increases wireless speed 12 times faster and coverage 5 times further*
 - Supports WISP (Wireless ISP) connection mode
 - Built-in hardware switch button to enable/disable wireless signal
 - Includes multi language EZMax setup wizard
 - Supports EZview to manage LAN devices
 - Supports WPS configuration button
 - Supports WEP, WPA, WPA2, DDNS, DMZ, Virtual Server, QoS and DHCP



3G-6400n nMAX Wireless 802.11b/g/n 3G Broadband Router

- nMAX**
- Shares 3G connection or xDSL/Cable connection with network users
 - Supports xDSL or cable broadband backup when 3G is not available
 - Complies with wireless 802.11b/g/n standards
 - Includes 16-languages EZmax setup wizard for Internet connection, wireless security and firmware upgrade
 - Supports WEP, WPA, WPA2, DDNS, QoS, Anti-Dos Firewall, MAC/IP filter, URL blocking, Virtual Server and DMZ
 - Internal antennas design



AR-7265WnA nMAX Wireless 802.11n ADSL 2/2 + Modem Router AR-7265WnB

- nMAX**
- Complies with ADSL2/2+ standards with downstream and upstream data rate up to 24Mbps and 1Mbps
 - Complies with wireless 802.11b/g/n standards
 - Increases the wireless speed up to 12 times faster and extends the coverage 6 times further*
 - Includes multi-languages setup wizard for Internet connection, wireless settings and firmware upgrade
 - Supports WPA, WPA2 enhanced security function and WPS configuration button
 - Supports WMM, UPnP, SNMP, DNS, IP/MAC filter, DMZ and virtual server



EW-7718Un nMAX Wireless 802.11n USB Adapter

- nMAX**
- Complies with wireless 802.11b/g/n standards
 - Includes multi-language EZmax setup wizard
 - Supports MIMO technology to increase wireless speed up to 12 times faster and extends the coverage up to 5 times further*
 - Supports WPS configuration function
 - Supports 64/128-bit WEP, WPA and WPA2 encryption
 - Includes USB stand to strengthen the performance





WIRELESS

EW-7717Un nMAX Wireless 802.11n USB Adapter

- nMAX**
- Complies with wireless 802.11b/g/n standards
 - Includes multi-language EZmax setup wizard
 - Supports MIMO technology to increase wireless download speed up to 12 times faster and extends the coverage up to 4 times further*
 - Supports WPS configuration button
 - Supports 64/128-bit WEP, WPA and WPA2 encryption
 - Includes USB stand to strengthen the performance



EW-7728In nMAX Wireless 802.11n PCI Adapter

- nMAX**
- Complies with wireless 802.11b/g/n standards
 - Includes multi language EZMax setup wizard
 - Supports MIMO technology to increase wireless speed up to 12 times faster and extends the coverage up to 6 times further*
 - Supports 64/128-bit WEP, WPA and WPA2 encryption
 - Supports WPS configuration function
 - Built-in 3dBi detachable antennas



EW-7727In nMAX Wireless 802.11n PCI Adapter

- nMAX**
- Complies with wireless 802.11b/g/n standards
 - Includes multi-language EZmax setup wizard
 - Supports MIMO technology to increase wireless download speed up to 12 times faster and extends coverage up to 4 times further*
 - Supports WPS configuration button
 - Supports 64/128-bit WEP, WPA and WPA2 encryption
 - Built-in 3dBi detachable antennas



EW-7708Pn nMAX Wireless 802.11n Cardbus Adapter

- nMAX**
- Complies with wireless 802.11b/g/n standards
 - Includes multi-language EZmax setup wizard
 - Supports MIMO technology to increase wireless speed up to 12 times faster and extends coverage up to 6 times further*
 - Supports WPS configuration function
 - Supports 64/128-bit WEP, WPA and WPA2 encryption



BR-6324nL nLITE Wireless Broadband Router

- nLITE**
- Complies with wireless 802.11b/g and compatible with 802.11n standards
 - Increases the wireless speed up to 6 times faster and extends the coverage 4 times further*
 - Built-in hardware switch button to enable/disable wireless signal
 - Supports EZview to manage LAN devices
 - Includes multi-languages setup wizard for Internet connection, wireless settings and firmware upgrade
 - Supports WPA, WPA2 enhanced security function and WPS configuration button
 - Supports WMM, DDNS, QoS, IP/MAC filter, DMZ and virtual server



BR-6225n nLITE Wireless Broadband Router

- nLITE**
- Complies with IEEE 802.11b/g and compatible with 802.11n standards
 - Increases the wireless speed up to 6 times faster and extends the coverage 3 times further*
 - Supports WISP (Wireless ISP) connection mode
 - Built-in hardware switch button to enable/disable wireless signal
 - Includes multi-languages setup wizard for Internet connection, wireless settings and firmware upgrade
 - Supports EZview to manage LAN devices
 - Supports WEP, WPA, WPA2, DDNS, DMZ, Virtual Server, QoS and DHCP



NEW



EW-7711UAn nLite Wireless High-Gain USB Adapter

- nLITE**
- Complies with wireless 802.11b/g standards
 - Compatible with wireless 802.11n standard with data rate up to 150Mbps
 - Includes multi language EZMax setup wizard
 - Supports 64/128-bit WEP, WPA, WPA2 encryption and WPS button
 - Supports WMM for wireless multimedia bandwidth requirements
 - Provides 3dBi hi-gain rotatable antenna to increase the coverage 3 times further*
 - Includes USB stand to strengthen the performance



NEW



EW-7711UTn nLite Wireless mini-size USB Adapter

- nLITE**
- Complies with wireless 802.11b/g standards
 - Compatible with wireless 802.11n standard with data rate up to 150Mbps
 - Increases wireless coverage 3 times further*
 - Includes multi-language EZmax setup wizard
 - Supports 64/128-bit WEP, WPA, WPA2 encryption and WPS-button



NEW





EW-7128g Wireless 802.11b/g Turbo Mode 32-bit PCI Adapter

- Complies with wireless 802.11b/g standards
- Includes multi-language EZmax setup wizard
- Supports turbo mode to enhance the data transfer rate
- Supports 64/128-bit WEP, WPA and WPA2 encryption
- Recommended to use with EA-IO7D to increase wireless coverage



EW-7318USg Wireless 802.11b/g Turbo Mode High-Gain USB Adapter

- Complies with wireless 802.11b/g standards
- Includes multi-language EZmax setup wizard
- Supports turbo mode to enhance the data transfer rate
- Supports WMM for wireless multimedia bandwidth requirements
- Supports 64/128-bit WEP, WPA and WPA2 encryption
- Includes 4dBi high-gain detachable antenna to increase wireless coverage



EW-7318Ug Wireless 802.11b/g Turbo Mode USB Adapter

- Complies with wireless 802.11b/g standards
- Includes multi-language EZmax setup wizard
- Supports turbo mode to enhance the data transfer rate
- Supports WMM for wireless multimedia bandwidth requirements
- Supports 64/128-bit WEP, WPA and WPA2 encryption



EW-7108PCg Wireless 802.11b/g Turbo Mode 32-bit Cardbus Adapter

- Complies with wireless 802.11b/g standards
- Includes multi-language EZmax setup wizard
- Supports turbo mode to enhance the data transfer rate
- Supports WMM for wireless multimedia bandwidth requirements
- Increases data reliability with Auto-Fallback
- Supports 64/128-bit WEP, WPA and WPA2 encryption



EW-7326lg Wireless 802.11b/g PCI Adapter

- Complies with wireless 802.11b/g standards
- High-speed data transfer rate - up to 54Mbps
- Supports 64/128-bit WEP Data Encryption, WPA/WPA2 (TKIP with IEEE 802.1x) and AES
- Includes detachable antenna
- Auto Fallback increases data security and reliability



EW-7316Ug Wireless 802.11b/g USB Adapter

- Complies with wireless 802.11b/g standards
- High-speed data transfer rate - up to 54Mbps
- Supports 64/128-bit WEP, WPA/WPA2 (TKIP with IEEE 802.1x) and AES data encryption
- Auto Fallback increases data security and reliability



EW-7206APg Wireless 802.11b/g Access Point

- Complies with wireless 802.11b/g standards
- Supports WDS (Wireless Distributed System) and Universal Repeater modes
- Supports Station mode to act as a wireless client station
- Supports DHCP and Radius servers with EAP-MD5 authentication
- Supports 64/128-bit WEP, WPA and WPA2 encryption



EW-7209APg Wireless 802.11b/g Access Point with 5-Port Switch

- Complies with wireless 802.11b/g standards
- Supports WDS(Wireless Distributed System) and Universal Repeater modes
- Supports MAC address access control and hidden SSID
- Supports DHCP and RADIUS servers with EAP-MD5 authentication
- Built-in 5-port 10/100Mbps Ethernet switch





EW-7206PDg Wireless 802.11b/g Power over Ethernet Access Point

- Complies with wireless 802.11b/g and IEEE802.3af PoE standards
- Supports WDS(Wireless Distributed System) and Universal Repeater modes
- Supports Station mode to act as a wireless client station
- Supports 64/128-bit WEP, WPA and WPA2 encryption
- Supports DHCP and Radius servers with EAP-MD5 authentication



EW-7301APg High Power Wireless 802.11 b/g Outdoor Access Point with build-in 9 dBi antenna



- Complies with wireless 802.11b/g 2.4GHz standards
- Supports AP mode and Repeater mode
- Supports High Speed Data Rate up to 54Mbps
- Supports Point-to-Point, Point-to-Multipoint wireless connectivity
- Supports data encryption: WEP/WPA/WPA2/ IEEE 802.1x Authentication
- Dust tight and Watertight and Weatherproof (IP65)
- Includes Power over Ethernet injector
- Built-in 9 dBi antenna



EA-IO7D Indoor 7dBi Omni-directional Desktop Antenna

- Complies with IEEE802.11b/g standards
- 7 dBi omni-directional antenna for radius coverage
- Provides universal RP-SMA connector to fit most wireless device
- Attaches to any metal surface with the magnetic relocation stand
- Includes user-friendly mounting kit



EA-OO8D Outdoor 8dBi Omni-Directional Antenna

- Complies with wireless 802.11b/g 2.4GHz standards
- Transmission distance up to 400m~800m
- Improves the upload and download speeds by 50%
- Outdoor waterproof fiberglass design
- Includes N-type connector and easy installation mounting kits



EA-OD9D Outdoor 9/14dBi Directional Antenna EA-OD14

- Complies with wireless 802.11b/g 2.4GHz standards
- Transmission distance up to 400m~900m (EA-OD9D)
- Transmission distance up to 800m~1500m (EA-OD14)
- Feasible to avoid the potential "Dead Spots"
- Includes N-type connector and easy installation mounting kits



EA-OD19 Outdoor 19dBi Directional Antenna

- Complies with wireless 802.11b/g 2.4GHz standards
- Transmission distance up to 3000m~4500m
- Feasible to avoid the potential "Dead Spots"
- Includes N-type connector and easy installation mounting kits





Outdoor Low Loss Antenna Cable Series

Model No.	Length	Cable Type	Jumper	System Loss(Max)
EA-CK6M B	6M	LMR [®] 400 Lite	RP-SMA to N Plug	4.2dB
EA-CK9M B	9M	LMR [®] 400 Lite	RP-SMA to N Plug	4.9dB
EA-CK12 B	12M	LMR [®] 400 Lite	RP-SMA to N Plug	5.5dB
EA-CK15 B	15M	LMR [®] 400 Lite	RP-SMA to N Plug	6.2dB

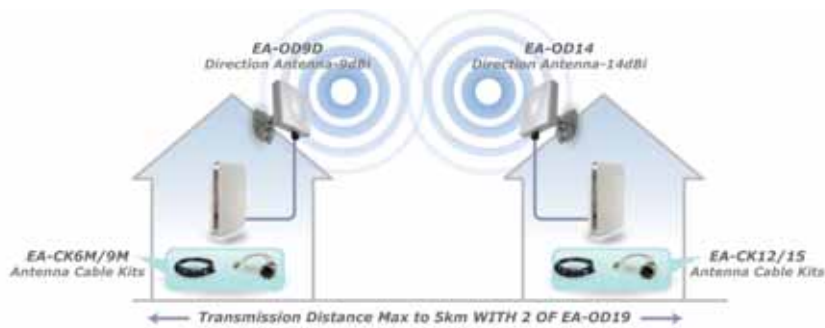
Weatherproof (PE with 5years UV Resistant)/ Low Pd & Low Cd/ Outside
Diameter: 10.29mm
Operation Temperature: -40~ +85°C / Storage Temperature: -70~ +185°C

Indoor Low Loss Antenna Cable Series

Model No.	Length	Cable Type	Jumper	System Loss(Max)
EA-CK1M	1M	LMR [®] 200	RP-SMA	1.0dB
EA-CK3M	3M	LMR [®] 200	RP-SMA	2.2dB

Weatherproof(PE with 5 years UV Resistant) / Low Pd & Low Cd/ Outside
Diameter: 4.95mm
Operation Temperature: -20~ +65°C / Storage Temperature: -30~ +75°C

Typical Outdoor Installation



BR-6204Wg Wireless 802.11b/g Broadband Router

- Complies with wireless 802.11b/g standards
- Supports WISP(Wireless ISP) connection mode
- Includes multi language EZmax setup wizard
- Supports AP client, Bridge and WDS modes
- Supports NAT/NAPT IP sharing, SPI anti-DOS firewall, Virtual Server and DMZ
- Supports Ports Trigger, DHCP, DDNS, VPN pass through



BR-6204WLg Wireless 802.11b/g Broadband Router

- Complies with wireless 802.11b/g standards
- Built-in Hardware switch button to enable / disable wireless signal
- Includes multi language EZmax setup wizard
- Supports NAT/NAPT IP sharing, MAC/IP filter, Access Control and DMZ
- Supports Client, WDS, AP+WDS mode
- Supports Remote Configuration, DHCP, DDNS, VPN pass through



3G-6200Wg Wireless 802.11b/g 3G Broadband Router with Print Server

- Shares 3G connection with network users
- Supports cable or xDSL broadband backup when 3G is not available
- Provides 2 USB ports for UMTS/HSDPA mobile Internet service, Printer sharing
- Complies with IEEE 802.11b/g standard
- Supports 16-languages EZmax setup wizard
- Supports WEP, WPA, WPA2, DDNS, DMZ, Virtual Server, QoS and DHCP



BR-6214K Fast Ethernet Broadband Router with 4-Port Switch

- Complies with IEEE802.3, IEEE802.3u Ethernet standards
- Includes multi-languages EZmax setup wizard
- Supports SPI anti-DOS firewall, Virtual Server, DMZ, UPnP and DDNS
- Supports Ports Trigger, VPN pass through (IPSec/PPTP/L2TP) and DHCP Client/server
- Supports policy-based QoS for gaming use



AR-7084gA Wireless 802.11b/g ADSL 2/2+ Modem Router

AR-7084gB

- Complies with ADSL2/2+ standards with downstream and upstream data rates up to 24Mbps and 1Mbps
- Complies with wireless 802.11b/g standards
- Includes multi-languages EZmax setup wizard
- Supports ACL and MAC/IP address access control
- Supports UPnP, SNMP, DDNS, SPI anti-DOS firewall and DHCP client/server
- Built-in 4 ports 10/100Mbps Ethernet switch



AR-7084A Fast Ethernet ADSL 2/2+ Modem Router

AR-7084B

- Complies with ADSL2/2+ standards with downstream and upstream data rates up to 24Mbps and 1Mbps
- Includes multi-languages EZmax setup wizard
- Supports ACL and MAC/IP address access control
- Supports UPnP, SNMP, DDNS, SPI anti-DOS firewall and DHCP client/server
- Built-in 4 ports 10/100Mbps Ethernet switch



AR-7025UmA USB ADSL Modem

- Supports end-to-end ATM traffic management & QoS
- Supports ADSL always-on, USB bus power design
- Friendly GUI configuration and management interface
- Supports USB 1.1
- Compatible with Windows98, 98SE, Me, 2000, XP and Vista
- Provides Panda Platinum Anti Virus (trial version)





PS-1206MF Fast Ethernet 1 Port USB2.0 MFP Server

- Complies with IEEE802.3/802.3u standards
- Includes multi-language EZmax setup wizard
- Shares MFP (All-in-One) printer with network users
- Supports LPR, IPP and Raw printing protocols
- Compatible with most popular MFP printers



PS-1206MFg Wireless 802.11b/g 1 Port USB2.0 MFP Server

- Complies with wireless 802.11b/g standards
- Includes multi-language EZmax setup wizard
- Shares MFP (All-in-One) printer with network users
- Supports LPR, IPP and Raw printing protocols
- Compatible with most popular MFP printers



PS-1206U Fast Ethernet 1 Port USB2.0 Print Server

- Complies with IEEE802.3/802.3u standards
- Includes multi-language EZmax setup wizard
- Shares USB printer with network users
- Supports TCP/IP, IPX/SPX, NetBEUI and Apple Talk protocols
- Supports LPR, IPP, SMB/TCP and RAW printing protocols



PS-1206P Fast Ethernet 1 Port Parallel Print Server

- Complies with IEEE 802.3/802.3u standards
- Includes multi-language EZmax setup wizard
- Shares one parallel printer with network users
- Supports TCP/IP, IPX/SPX, NetBEUI and AppleTalk network protocols
- Supports LPR, IPP, SMB/TCP and Raw printing protocols



PS-1206UWg Wireless 802.11b/g 1 Port USB2.0 Print Server

- Complies with wireless 802.11b/g standards
- Includes multi-language EZmax setup wizard
- Shares USB printer with network users
- Supports TCP/IP, IPX/SPX, NetBEUI and Apple Talk protocols
- Supports LPR, IPP, SMB/TCP and RAW printing protocols



PS-1206PWg Wireless 802.11b/g 1 Port Parallel Print Server

- Complies with wireless 802.11b/g standards
- Includes multi-language EZmax setup wizard
- Shares one parallel printer with network users
- Supports TCP/IP, IPX/SPX, NetBEUI and AppleTalk network protocols
- Supports LPR, IPP, SMB/TCP and Raw printing protocols



PS-1216U Fast Ethernet 1 Port USB2.0 GDI Print Server

- Complies with IEEE 802.3/802.3u standards
- One USB 2.0 port to connect with GDI Printer
- Enables all network users to share a GDI Printer
- Compatible with most popular printer brands
- Supports Web-based management and windows configuration utility



PS-3103P Fast Ethernet 3 Ports Parallel Print Server

- Complies with IEEE 802.3/802.3u standards
- Shares 3 parallel printers with network users
- Supports TCP/IP, IPX/SPX, NetBEUI and Apple Talk protocols
- Supports LPR, IPP, SMB/TCP and RAW printing protocols





PRINT SERVERS / MFP SERVERS

PS-3207U Fast Ethernet 2 USB 2.0 + 1 Parallel Ports Print Server

- Complies with IEEE 802.3/802.3u standards
- Includes multi-language EZmax setup wizard
- Shares 2 USB 2.0 + 1 Parallel printers with network users
- Supports TCP/IP, IPX/SPX, NetBEUI and Apple Talk protocols
- Supports LPR, IPP, SMB/TCP and RAW printing protocols



PS-3207UWg Wireless 802.11b/g 2 USB 2.0 + 1 Parallel Ports Print Server

- Complies with wireless 802.11b/g standards
- Includes multi-language EZmax setup wizard
- Shares 2 USB 2.0 + 1 Parallel printers with network users
- Supports TCP/IP, IPX/SPX, NetBEUI and Apple Talk protocols
- Supports LPR, IPP, SMB/TCP and RAW printing protocols



Typical Installation Diagram





IP CAMERAS & HOME ENTERTAINMENT

IC-7000PT IC-7000PTn Fast Ethernet / Wireless 802.11n Dual Mode Pan / Tilt IP Camera



- Views real time Motion-JPEG or MPEG4 video via Internet Explorer
- Complies with wireless 802.11b/g/n standards with WEP, WPA and WPA2 encryption (IC-7000PTn Only)
- Records audio/video stream, "live" or on a predetermined schedule
- Supports Pan/Tilt with viewing angles 120° (vertical) and 350° (horizontal)
- Supports motion detection and snapshots the triggered events
- Supports 4x digital zoom
- Supports SD card to store snapshot images locally
- Supports 2-way audio
- Supports UPnP protocol



IC-7000 Fast Ethernet Pan/Tilt IP Camera with Night Vision

- Records audio/video stream, "live" or on a predetermined schedule
- Supports Pan/Tilt with viewing angles +180° ~ -35° (vertical) and ±175° (horizontal)
- Supports motion detection and snapshots the triggered events
- Supports 4x digital zoom
- Supports SD card to store snapshot images locally
- Supports Night Vision with built-in IR (Infra red) LED
- Built-in TV Out connector to view video through TV set



IC-3010 IC-3010Wg Wired/Wireless Dual Mode IP Camera



- Complies with wireless 802.11b/g standards with WEP, WPA and WPA2 encryption (IC-3010Wg only)
- Views real time Motion-JPEG or MPEG4 video via Internet Explorer
- Supports multi-area motion detection and snapshots to e-mail and FTP
- Supports 2-way audio
- Includes easy-to-use 16 channels Viewer & Recorder utility to view 16 cameras simultaneously
- Supports DDNS and UPnP functions



IC-1510 IC-1510Wg Wired / Wireless 802.11b/g Motion-JPEG IP Camera

- Complies with wireless 802.11b/g standards with WEP, WPA and WPA2 encryption (IC-1500Wg only)
- Supports high speed hardware-based Motion-JPEG compression
- Supports video resolution: 640x480(VGA), 320x240(CIF) and 160x120(QCIF)
- Supports Snapshot-to-Email on events and predetermined schedule recordings in AVI format
- Supports Auto Brightness/ Contrast/ Hue control
- Built-in manual focus lens



WP-S1100 Wireless 802.11b/g/n Projector Server



- Complies with wireless 802.11b/g/n standards
- Presents the screen contents from a computer to the projector/monitor wirelessly
- Supports VGA and HDMI with auto-scaling video output
- Supports MPEG 1/2/4, Motion-JPEG, WMV9 and H.264 video playback
- Includes Infrared Remote Control for meeting control
- Shares Internet connection during presentations
- Supports operation system: Windows XP/Vista



NS-2501 NS-2502 1 Bay / 2 Bay Gigabit SATA NAS Server



- Complies with the IEEE 802.3, IEEE 802.3u and IEEE 802.3ab standards
- Supports 10/100/1000Base-TX Ethernet
- Built-in FTP and Samba server
- Supports CIFS, NTFS, FAT16, FAT32, ext2, ext3 file systems
- Shares external USB mass storage and printer
- Supports file sharing via FTP or Network Neighborhood
- Supports P2P download (Bit Torrent) & FTP/HTTP download agent
- Supports UPnP, Media Server and iTunes Server
- Supports SATA RAID 0 (Striping) / 1 (Mirror) for high speed / data backup applications (NS-2502 Only)



MA-2100Wn Wireless 802.11n Digital Media Adapter



- Playbacks multimedia files from network devices (PC, NAS, IP Cam...)
- Provides 10/100 /100Mbps Ethernet and built-in 802.11n wireless connectivity
- Supports multiple Audio/Video formats
- Supports 720p and 1080i high-definition video resolution
- Provides HDMI, YPbPr, Composite output interfaces
- User intuitive installation and operation via OSD and includes an IR remote controller





i connect

CONNECTIVITY

ES-3205P 5/8/16 Ports Fast Ethernet Desktop Switch

ES-3208P

ES-3116P

- Complies with IEEE802.3 and IEEE802.3u Ethernet standards
- Store-and-Forward architecture
- Supports full wire speed forwarding and filtering rates
- Supports Auto MDI/MDI-X



ES-5500P 5/8 Ports Gigabit Ethernet Desktop Switch

ES-5800P



- Complies with the IEEE802.3, IEEE802.3u and IEEE802.3ab standards.
- Store-and-Forward architecture, full wire speed filtering and forwarding rates
- Auto learning and aging source address
- Supports jumbo frame
- Supports Auto MDI/MDI-X



HP-8501 85Mbps PowerLine Ethernet Adapter

HP-8501K

- Uses an electrical wire to transmit data like an Ethernet network
- Provides 1 x 85Mbps Powerline port + 1 x 10/100Mbps Ethernet port
- Supports 56-bits DES link encryption to secure Powerline data transmission
- Transmission distance up to 200 meters



HP-2001AV 200Mbps PowerLine Ethernet Adapter

HP-2001AVK

- Complies with 200Mbps HomePlug AV and IEEE 802.3 / 802.3u Standards
- Uses an electrical wire to transmit data like an Ethernet network
- Built in hardware group button and reset button
- Supports 128-bit AES link encryption to secure Powerline data transmission
- Easy Installation and transmission range up to 300 meters



EW-7206PDg Wireless 802.11b/g Access Point with Power over Ethernet

- Complies with wireless 802.11b/g and IEEE802.3af PoE standards
- Supports WDS(Wireless Distributed System) and Universal Repeater modes
- Supports station mode to act as a wireless client station
- Supports 64/128-bit WEP, WPA and WPA2 encryption
- Supports DHCP and Radius servers with EAP-MD5 authentication



ES-5844P Fast Ethernet 8-Port Switch with 4 Power over Ethernet Ports

- Complies with IEEE802.3, IEEE802.3u, IEEE 802.3x and IEEE 802.3af standards
- Auto detects power devices (PD) and power consumption levels
- Supports smart features for PD on/off, PD status and power feeding priority
- Supports thermal shutdown protection (Tj > 150°C)



ES-5808P Fast Ethernet 8 ports Desktop PoE Web Smart Switch

NEW

- Complies with IEEE 802.3/802.3af/802.3u/802.3x/802.1p/802.1q standards
- Supplies 48V/DC with 15.4 W output per port
- Store-and-Forward architecture
- Provides port based remote power On/Off to restart connected PoE devices individually
- Supports Auto MDI/MDI-X and Auto-Negotiation
- Supports 4-group port based VLAN, and password-protected configuration



ES-5816P Fast Ethernet 16 ports Rack-mount PoE Web Smart Switch

NEW

- Complies with IEEE 802.3/802.3af/802.3u/802.3x/802.1p/802.1q standards
- Supplies 48V/DC with 15.4 W output per port
- Store-and-Forward architecture
- Provides port based remote power On/Off to restart connected PoE devices individually
- Supports Auto MDI/MDI-X and Auto-Negotiation
- Supports IGMP snooping to optimize network performance
- Supports 16 port based VLAN and 20 Tag Base VLAN groups
- Supports 2 Trunking groups (4 ports per group and up to 2 groups for each device)





i connect

NAC & LOAD BALANCER

AC-M1000 2 WAN+8LAN Network Access Controller (Manage 5 EW-7206APg/EW-7209APg/EW-7206PDg)

- Supports Role-based and Policy-based access control
- Supports multiple authentication methods and per-user bandwidth control
- Centralized AP management (with 5 EW-7206APg/EW-7206PDg/EW-7209APg)
- Provides 2 WAN ports for best routing and fail-over
- Supports 2000 guest accounts with different access levels and time slots
- Provides VPN secured network technology
- Best solution for a 50 users environment



AC-M3000 2 WAN+8LAN Network Access Controller (Manage 12 EW-7206APg/EW-7209APg/EW-7206PDg)

- Supports Role-based and Policy-based access control
- Supports multiple authentication methods and per-user bandwidth control
- Centralized AP management (with 12 EW-7206APg/EW-7206PDg/EW-7209APg)
- Provides 2 WAN ports for best routing and fail-over
- Supports 2000 guest accounts with different access levels and time slots
- Provides VPN secured network technology
- Best solution for a 120 users environment



BR-6641 4 WAN+1LAN Load Balancer Router

- Supports Inbound and Outbound load balancing by bytes and packet
- Built in DNS Server and auto backup connection
- Supports Policy-based bandwidth management
- Supports Virtual Server / Multi-DMZ / Access Control
- Supports VPN pass through / SNMP / MRTG
- Supports session control



BR-6624 2 WAN + 4LAN Load Balancer Router

- Supports Fail-Over and Outbound load balancing by bytes, packet, & session
- Supports 5 groups of access levels with up to 253 network users
- Supports QoS for traffic priority control
- Supports Virtual server / Multi-DMZ / Dynamic DNS
- Supports VPN pass through (PPTP / IPSec) & PPTP client



i connect

SWITCHES

ES-3116RL 16/24 Ports Fast Ethernet Rackmount Switch ES-3124RL

- Complies with the IEEE802.3 and IEEE802.3u Ethernet standards
- Supports Full/Half Duplex and Auto-Negotiation
- Supports Store & Forward architecture with filters fragment & CRC error packets
- Supports full wire speed forwarding and filtering rates
- Supports Auto MDI/MDI-X



ES-5226RS 24 Ports Fast Ethernet Web Smart Switch with 2 Gigabit Combo Ports



- Complies with IEEE802.3/802.3u/802.3ab/802.3z standards
- 24 10/100 Mbps Fast Ethernet RJ45 Ports and 2 10/100/1000 Mbps Gigabit Ethernet RJ45/SFP slot ports
- Supports IEEE802.3x Flow Control
- Supports Port based priority and 802.1p priority tag
- Supports Port based VLAN and 802.1q Tag VLAN
- Supports Auto MDI/MDIX and Auto-Negotiation
- High Switch Fabric up to 8.8Gbps
- Store-and-Forwarding switching and Non-Blocking full wire speed architecture
- Pause-frame for full duplex mode and Back-pressure for Half Duplex mode



ES-5224RM+ 24 Ports Fast Ethernet Management Switch with 2 Gigabit Combo Ports

- Complies with IEEE802.3/802.3u/802.3ab/802.3z standards
- 24 10/100 Mbps Fast Ethernet RJ45 Ports and 2 10/100/1000 Mbps Gigabit Ethernet RJ45/SFP slot ports
- Stackable to 16 switches and manages via one IP address
- Supports 802.1q with GVRP/ GARP and IGMP snooping
- Supports SNMPv1, v2c network management
- Support 802.1x access control, port mirroring and bandwidth control



ES-5240GE 24 Ports Gigabit Ethernet Switch with 4 SFP Slots



- Complies with IEEE 802.3/802.3u/802.3ab/802.3z standards
- Supports Gigabit network and jumbo frames up to 9.6K
- Supports Auto MDI/MDI-X and Auto-Negotiation
- Store-and-Forward switching and Non-Blocking full wire speed architecture
- Built-in 4 SFP slots for long distance fiber connection





SWITCHES

ES-5160G+ 16/24 Ports Gigabit Ethernet Web Smart Switch with 4 x SFP Slots

- Complies with IEEE802.3/802.3u/802.3ab/802.3z standards
- Supports IEEE802.3x Flow Control
- Supports IEEE802.1q Q-in-Q Tag VLAN
- Supports IEEE802.1p QoS with 4 priority queues
- Supports Port Mirroring
- Supports Per-port Shaping, Policing and Broadcast Storm Control
- Supports 9600byte Jumbo Frame
- Supports 802.1x Network Access Security
- Provides Web-base Management



ES-5240GM 24 Ports Gigabit Ethernet Management Switch with 4 SFP Slots

- Provides 4 Dual Media for Flexible Fiber Connection and supports 9KB jumbo frame.
- Provides IEEE 802.1x Access Control to improve network security
- Q-in-Q VLAN (up to 4094 VLAN entries) for performance & security
- IEEE 802.1D Compatible, 802.1w Rapid Spanning Tree and 802.1s Multiple Spanning Tree
- Unknown Unicast/Broadcast/Multicast Storm Control
- IP-Mac-Port binding function for LAN security
- OCL Based on Application traffic for QoS and rate limitation management
- ACL Based on Ethernet Type/ARP/IPv4 for packets permit or deny, rate limitation and port copy



SFP/ Mini GBIC/ Small Form Factor Pluggable(SFP)

- Complies with IEEE 802.3z Gigabit Ethernet, and Fiber Channel standard
- Industry standard SFP package
- Single 3.3V power supply
- Simplex/ Duplex LC connector up to 1.25Gb/s bi-directional data links
- Die cast metal housing for low EMI
- Hot Pluggable
- Class 1 laser product complies with EN 60825-1



155Mbps (Fast Ethernet / SDH STM1 / SONET OC3)

Part Number	Wavelength	Media	Distance
MG-B100MB	1310 nm	MMF	2km*
MG-B100S3	1310 nm	SMF	30km*
MG-B100S6	1310 nm	SMF	60km*
MG-B100S10	1550 nm	SMF	100km*
MG-B100PU2	T1310/R1550	SMF	20km*
MG-B100PD2	T1550/R1310	SMF	20km*

1.0625 / 1.25Gbps (Gigabit Ethernet / Fiber Channel)

Part Number	Wavelength	Media	Distance
MG-1000AMA	850 nm	MMF	550m*
MG-1000AMB	1310 nm	MMF	2km*
MG-1000AS1	1310 nm	SMF	10km*
MG-1000AS3	1310 nm	SMF	30km*
MG-1000AS7	1550 nm	SMF	70km*
MG-1000PU1	T1310/R1490	SMF	10km*
MG-1000PD1	T1490/R1310	SMF	10km*
MG-1000PU2	T1310/R1490	SMF	20km*
MG-1000PD2	T1490/R1310	SMF	20km*

EK-PA2C PS/2,USB 2 Ports KVM Switch with Cables
EK-PS2C
EK-UA2C

- Supports video resolutions up to 1920 x 1440 @ 250MHz bandwidth
- Supports Auto Scan that switches automatically between PCs
- Supports audio feature to share one set of speakers for 2 PCs (EK-PA2C EK-UA2C only)
- Two built-in cables to save costs
- Supports DOS, Win3.X, Win95/98/98SE/ME/XP/2000/NT/Vista, Netware, Unix, Linux
- No external power and software required



EK-PSK2 PS/2 2/4 Ports KVM Switch with Cables
EK-PSK4

- Supports high video resolution up to 2048 x 1536 @ 350MHz bandwidth
- Supports Auto Scan (Programmable) and Hot Plug
- Supports Hotkey and Push Button to switch between PCs
- Compatible with DOS, Win3.X, Win95/98/98SE/ME/XP/2000/NT/Vista, Netware, Unix, Linux
- Includes KVM cables to save costs
- No power adapter and software required



EK-PAK2 PS/2 2/4 Ports KVM Switch with Cables and Audio/Mic Support
EK-PAK4

- Supports high video resolution up to 2048 x 1536 and 350MHz bandwidth
- Supports audio and microphone switching
- Supports auto Scan (Programmable) and Hot Plug
- Supports Hotkey and Push Button to switch between PCs
- Compatible with DOS, Win3.X, Win95/98/98SE/ME/XP/2000/NT/Vista, Netware, Unix, Linux
- Includes KVM cables to save costs
- No power adapter and software required



EK-UAK2 USB 2/4 Ports KVM Switch with Cables and Audio/Mic Support
EK-UAK4

- Supports high video resolution up to 2048 x 1536 and 350MHz bandwidth
- Supports audio and microphone switching
- Supports auto Scan (Programmable) and Hot Plug
- Supports Hotkey and Push Button to switch between PCs
- Compatible with DOS, Win3.X, Win95/98/98SE/ME/XP/2000/NT/Vista, Netware, Unix, Linux
- Includes KVM cables to save costs
- No power adapter and software required



EK-08RE 8/16 Ports Rackmountable PS/2 KVM Switch with OSD
EK-16RE

- Easy PC selection via push buttons, hot keys and OSD (On Screen Display) menu
- Support High video resolution up to 1920 X 1440 @ 250MHz video bandwidth
- Add or remove PCs without powering down the KVM switch or PCs
- Auto Scan mode for monitoring PCs and keyboard status restored when switching PCs
- Support keyboard, mouse and monitor emulations
- LED indicators for easy status monitoring, buzzer sound for switching port confirmation
- Compatible with Windows 95/98SE/ME/XP/2000/NT/Vista, DOS, Netware, Unix and Linux OS



EK-C18D: 1.8 meters cable for EK-08RE/EK-16RE
EK-C30D: 3.0 meters cable for EK-08RE/EK-16RE

EK-08RC 8/16 Ports Combo (PS/2 & USB) KVM Switch with OSD
EK-16RC

- Controls 8/16 computers using a single set of console (keyboard, mouse and monitor)
- Supports PS/2 or USB Keyboard/Mouse for Console ports and PC ports
- Supports 3 level cascades to control 512/ 4096 PCs
- Push Button, Hot-Keys and OSD (On Screen Display) for PC-to-PC switching
- Supports VGA resolutions up to 2048 x 1536 @ 85HZ.
- Supports Firmware upgrade, Auto Scan and Hot Swap
- Support Microsoft IntelliMouse and IntelliMouse Explorer
- Compatible with Windows 98SE/ME/2000/XP/Vista/2003 Server, Linux, Mac OS9/OSX and Sun Microsystems



EK-C18C: 1.8 meters cable for EK-08RC/EK-16RC
EK-C30C: 3.0 meters cable for EK-08RC/EK-16RC



EN-9260TX-E Gigabit Ethernet PCI Express Adapter



- Complies with IEEE 802.3/802.3u/802.3ab standards and IEEE 802.1Q Virtual LAN(VLAN) tag
- Supports PCI Express base specification revision 1.0a
- Supports Single-lane(or x1)PCI Express with 2.5Gbps throughput rates
- Supports 10/100/1000Mbps data rate Auto-Negotiation and Auto MDI/MDIX
- Supports Advanced Configuration Power Interface and Wake On LAN power management



EU-4207 USB2.0 to Fast Ethernet Adapter

- Complies with IEEE 802.3/802.3u standards
- Complies with USB 2.0/1.1 specifications
- Supports 10/100Mbps auto-negotiation
- Provides bus-powered design without an external power adapter required



EN-9235TX-32 Gigabit Ethernet 32-bit PCI Adapter



- Complies with the IEEE 802.3/802.3u/802.3ab/802.3x standards
- Supports IEEE 802.1Q Virtual LAN(VLAN) tag
- Supports 10/100/1000Mbps auto negotiation and jumbo frame
- Supports Plug & Play installation—auto setup IRQ and I/O address
- Supports Advanced Configuration Power Interface and Wake On LAN power management



EU-4230 USB2.0 to Fast Ethernet Adapter with 3-Port USB Hub

- Complies with IEEE 802.3/802.3u standards
- Complies with USB 2.0 and backward compatible with USB1.1 with data rates 1.5/12/480 Mbps
- Built-in 3 ports USB2.0 hub
- Supports 10/100Mbps Auto-Negotiation
- Supports bus-powered and self-power mode



EP-4203DL Gigabit Ethernet 32-bit Cardbus Adapter



- Complies with the IEEE 802.3/802.3u/802.3ab/802.3x standards
- Supports IEEE 802.1Q Virtual LAN(VLAN) tag
- Supports 10/100/1000Mbps auto negotiation and jumbo frame
- Supports Plug & Play installation—auto setup IRQ and I/O address
- Provides a complete set of diagnostic LEDs



EU-HB4M 4 Ports USB2.0 High-Speed Hub

- Complies with USB 2.0 and backward compatible with USB1.1 with data rates 1.5/12/480 Mbps
- Supports automatic connection and speed detection
- Plug & Play installation and Hot-Plugging
- Supports bus-powered and self-power mode



EN-9130 TXA /TX /TXL Fast Ethernet 32-bit PCI Adapter

- Complies with the IEEE 802.3/802.3u/802.3x standards
- Supports 10/100Mbps auto negotiation
- Supports Plug & Play installation—auto setup IRQ and I/O address
- Supports Advanced Configuration Power Interface and Wake On LAN power management
- Provides LEDs to indicate network link/activity



EU-CV4M 4 Ports USB2.0 PCI Adapter

- Provides 4 external USB2.0 ports and 1 internal USB2.0 port (sharing with first external USB port)
- Complies with USB 2.0 and backward compatible with USB1.1 with data rates 1.5/12/480 Mbps
- Plug & Play installation



EB-MDC1 Mini Bluetooth V2.1 + EDR USB Adapter (Class1)

- Complies with Bluetooth 2.1/2.0/1.2/1.1 with data rate up to 3Mbps
- Transmission distance up to 100 meters
- Connects up to 7 different Bluetooth devices
- Streams MP3 and audio from PC to Bluetooth headset
- Accesses Internet via Bluetooth mobile phone with GPRS/CDMA connection
- Low power consumption
- Compatible with Windows 2000/XP/Vista, Linux and Mac OS



10/100Base-TX to 100Base-FX Media Converter

- ET-912MSC+ 10/100Base-TX to 100Base-FX(MM/SC/1310nm/2KM)
- ET-912MST+ 10/100Base-TX to 100Base-FX(MM/ST/1310nm/2KM)
- ET-912SC3+ 10/100Base-TX to 100Base-FX(SM/SC/1310nm/30KM)
- ET-912SC4+ 10/100Base-TX to 100Base-FX(SM/SC/1310nm/40KM)
- ET-912SC6+ 10/100Base-TX to 100Base-FX(SM/SC/1310nm/60KM)
- ET-912SC8+ 10/100Base-TX to 100Base-FX(SM/SC/1310nm/80KM)
- ET-912SCA+ 10/100Base-TX to 100Base-FX(SM/SC/1550nm/DFB-100KM)



EB-MDC2 Mini Bluetooth V2.1 + EDR USB Adapter (Class2)

- Complies with Bluetooth 2.1/2.0/1.2/1.1 with data rate up to 3Mbps
- Transmission distance up to 10 meters
- Connects up to 7 different Bluetooth devices
- Streams MP3 and audio from PC to Bluetooth headset
- Accesses Internet via Bluetooth mobile phone with GPRS/CDMA connection
- Low power consumption
- Compatible with Windows 2000/XP/Vista, Linux and Mac OS



1000 Base-T to 1000 Base-SX/LX Media Converter

- ET-913MC+ 1000Base-T to 1000Base-SX(MM/SC/850nm/550m)
- ET-913SC1+ 1000Base-T to 1000Base-LX(SM/SC/1310nm/10km)
- ET-913SC2+ 1000Base-T to 1000Base-LX(SM/SC/1310nm/20km)
- ET-913SC3+ 1000Base-T to 1000Base-LX(SM/SC/1310nm/30km)
- ET-913SC6+ 1000Base-T to 1000Base-LX(SM/SC/1550nm/DFB-60km)



ET-940MCR 16 Slots Converter Chassis

- Up to 16 slots of media converters
- 19" standard rack-mount size and 3U height
- Hot-swappable replacement of media converters and power supplies
- Two redundant power supplies with two cooling fans
- Power isolation design to ensure each bay is electrically isolated from others



10/100Base-TX to 100base-FX WDM Single Fiber Converter

- ET-912W2A+ 10/100TX to 100FX , 20km , TX 1310 , RX 1550
- ET-912W2B+ 10/100TX to 100FX , 20km , TX 1550 , RX 1310
- ET-912W4A+ 10/100TX to 100FX , 40km , TX 1310 , RX 1550
- ET-912W4B+ 10/100TX to 100FX , 40km , TX 1550 , RX 1310



ET-913SFP 10/100/1000BaseT to 1000SX/LX SFP Media Converter

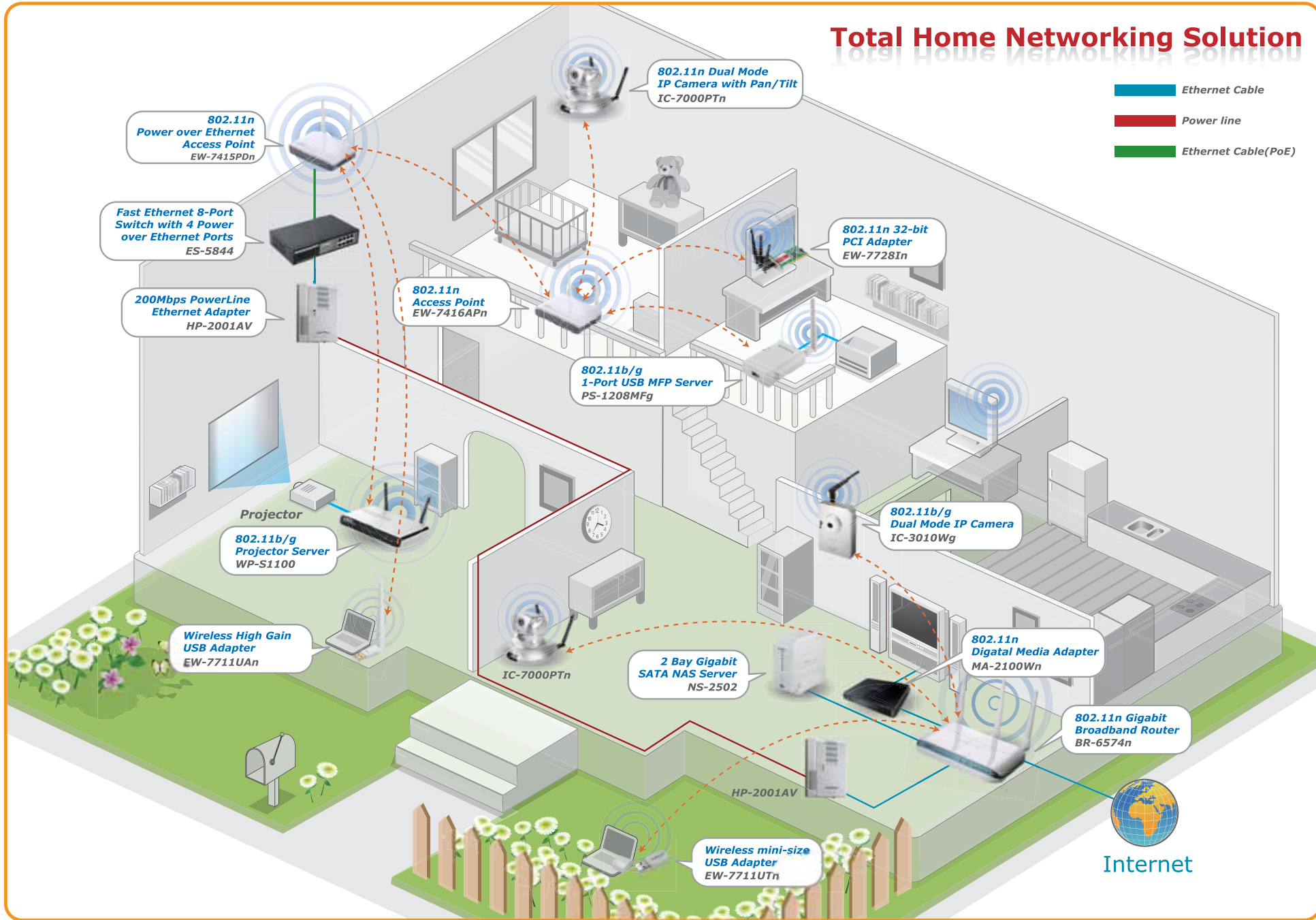
- Complies with IEEE 802.3ab 1000BaseT and IEEE 802.3z 1000BaseSX/LX Gigabit Ethernet standards
- One 10/100/1000BaseT Gigabit Ethernet TP Port and one SFP slot for Gigabit link
- One SFP slot can support either Multi or Single Mode SFP Modules
- TP port can support Full-Duplex, Auto-MDI/MDI-X and Auto-Negotiation
- Supports link fault pass through



(The SFP module is not included)

Total Home Networking Solution

-  Ethernet Cable
-  Power line
-  Ethernet Cable(PoE)



Internet